

Rushey Green Holiday Club

Holiday Planner

Dear parents and guardians,

We know how hectic life is, so please print this page and mark in the days you have booked in with us. Below is our holiday guide which will help make your child's time with us as enjoyable as possible.

Superkids' Holiday Guide

- Please notify us if you cannot arrive by 9.30am for breakfast.
- **We have some trip days this holiday, so please bring backpack for their packed lunch box and water bottle.**
- **No nuts** inside packed lunches, including spreads like peanut butter or Nutella and chewy bars please.
- Refillable water bottle with your child's name on.
- **Check the planner on page 2 and see what your child may need for that day e.g. clothing or arrival/collection times.**
- Any medication must be handed into the team (medication form required)
- **Check the weather, rain jacket day, sunhat or suitable footwear?**
- Sun cream? Please leave a bottle of sunblock/sunscreen inside your child's pack lunch box or bag

Other information:

All places must be pre-booked. Drop in sessions cannot be accepted. If you require additional sessions to your original booking, please email us.

For the discounted rate, sessions must be pre- booked and paid for by cut-off date **Monday 20th July 2026**

Payment information:

We Accept

- Superkids accept a wide range of childcare vouchers.
- Paying with the Government Tax Free voucher scheme? Please provide us with your payment reference.
- Cheque payments are accepted.
- We accept online bank transfers; reference details can be found below.

We Do Not Accept

- Superkids currently do not accept card payments. This is so we can offer the best price to all our parents who use our services.
- Cash is not accepted at our clubs for security reasons

Our bank details:

Superkids Club Ltd

Sort Code: 09-01-28

Account Number: 37043040

Payment reference codes:

P and your child's name

We look forward to seeing you.

Pick up and drop off times

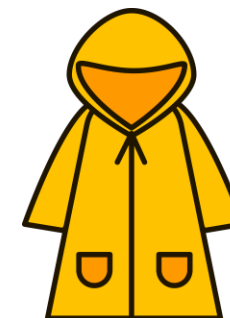
The club is open from 8am

Breakfast from 8am – 9:30am.

Snack time from 3.30pm – 4pm

Collection from 4pm -6pm

Club closes at 6pm



SUMMER ACTIVITY SCHEDULE

Highlighted in red are items you may need to bring for the activity or other charges.

Week 1: 23 rd to 24th July Puzzle Quest	Week 2: 27th July to 31st July Community Heroes	Week 3: 3 rd to 7th August Art Explosion
Mon 20 th - Closed (inset day)	Mon 27 th – Police Rescue	Mon 3 rd – Mega Art Project
Tues 21 st – Closed	Tues 28 th – Health Heroes	Tues 4 th – Tie Dye T-shirts £4
Weds 22 nd - Closed	Weds 29 th – Knowledge Guardians	Weds 5 th – Messy Makers
Thurs 23 rd – Brain Booster	Thurs 30 th - Building our Community	Thurs 6 th – Dulwich Picture Gallery Trip Day. Arrive by 9am. Collect after 5pm.
Friday 24 th – Code Breakers	Friday 31 st - Fire Fighter Heroes Trip Day. Arrive by 9am. Collect after 5pm.	Friday 7 th – Graffiti Art

Week 4: 10th to 14th Future World	Week 5: 17th to 21st August Sports Remix	Week 6: 24th to 28th August Future World
Mon 10 th - Europe Explorer	Mon 17 th – Water Fun Day Bring change of clothes and towel.	Mon 24 ^h – Robot Revolution
Tues 11 th – Discover Australia	Tues 18 th – Obstacle Course Mania	Tues 25 th – Future City 2050
Weds 12 th – African Adventure £3 extra	Weds 19 th – Bungee Football Tournament £5 extra. Trip Day. Arrive by 9am. Collect 5pm.	Weds 26 th – Alien Friends
Thurs 13 th – Amazing Asia	Thurs 20 th - Silly Sports Day	Thurs 27 th – Future Tech Lab
Fri 14 th - Americas Day	Fri 21 st - Championship Games	Friday 28 th – Science Museum £5 extra. Trip Day. Arrive by 9am. Collect after 5pm.

Week 7: 1 st September Puzzle Quest	Rushey Green club is closed on 2 nd and 3 rd September. Breakfast and After School Club re-opens on 4 th September.
Tues 1 st Sept – Treasure Hunters Orienteering. Trip Day. Arrive by 9am. Collect after 5pm.	We look forward to seeing you at October half term.